

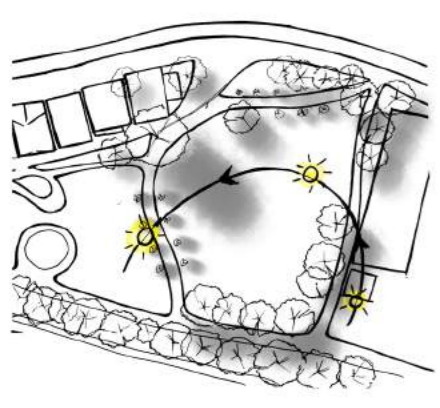
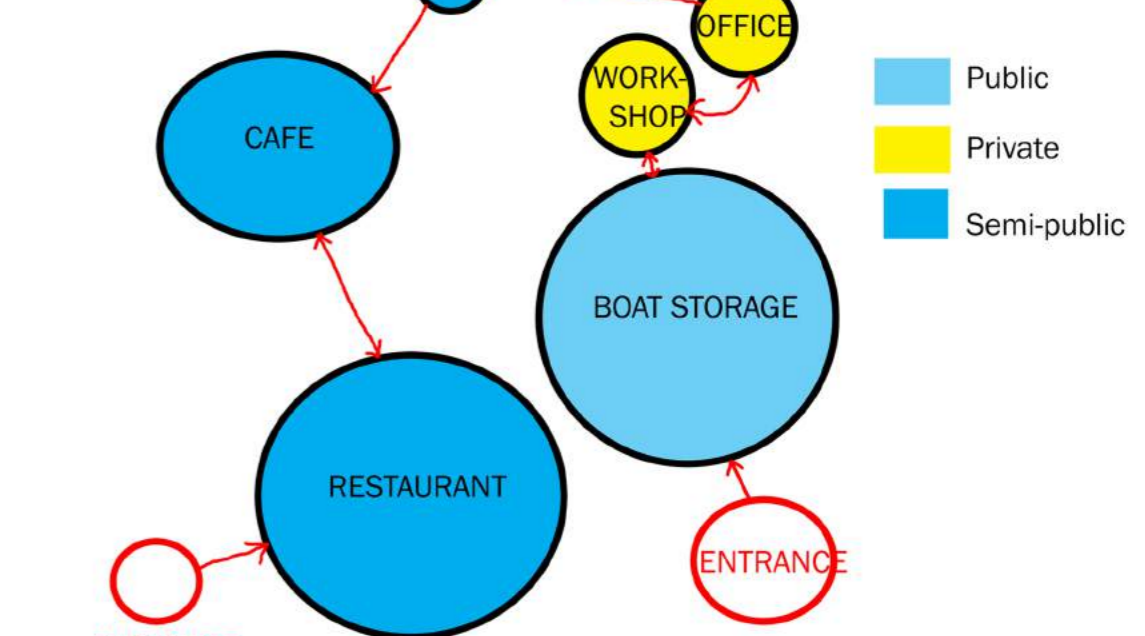
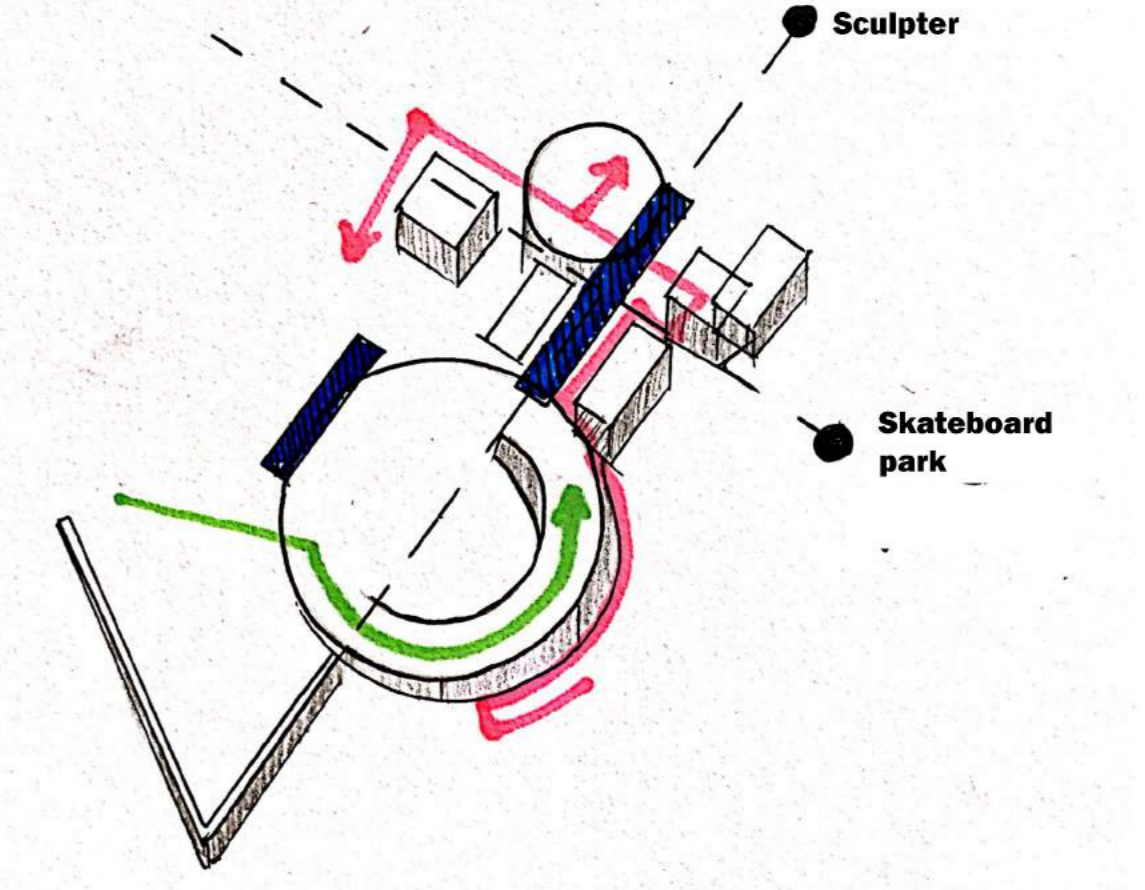
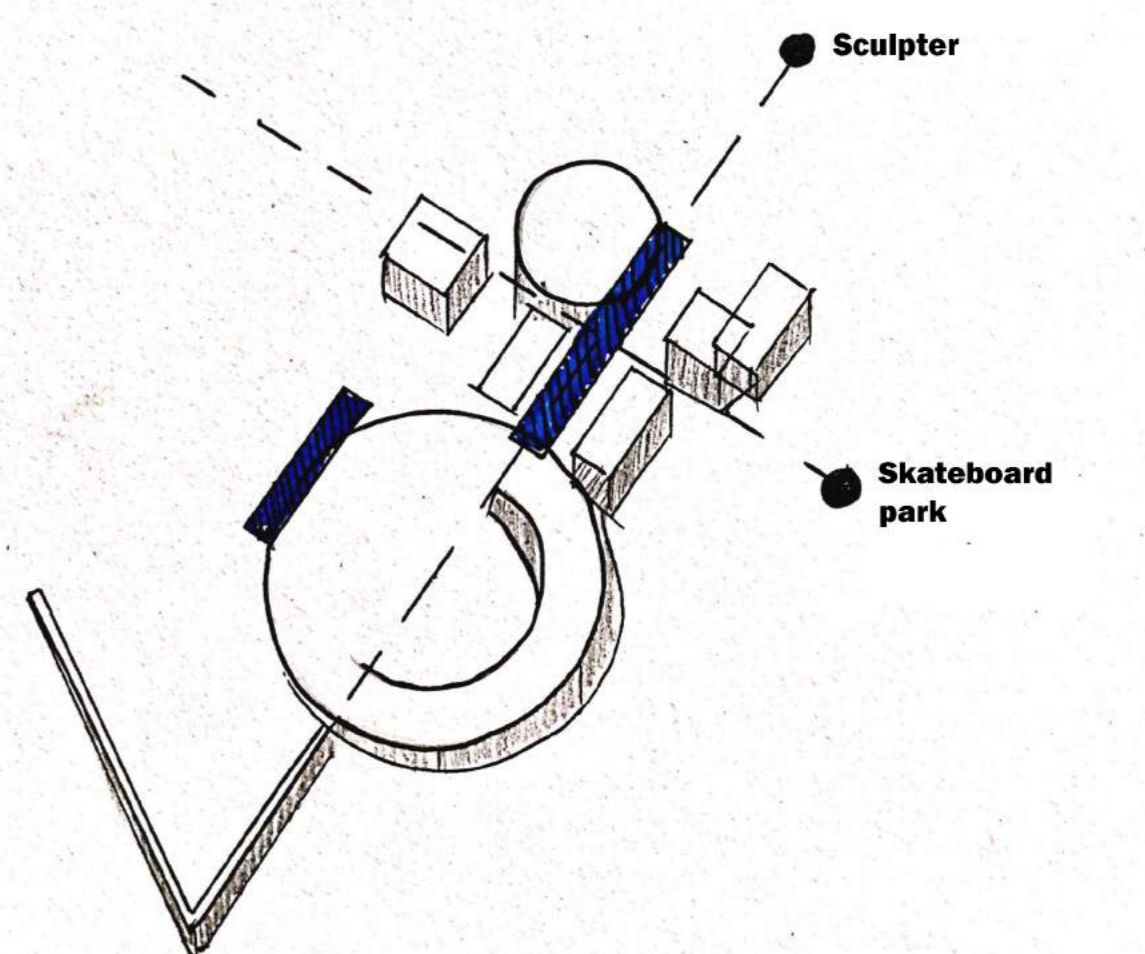
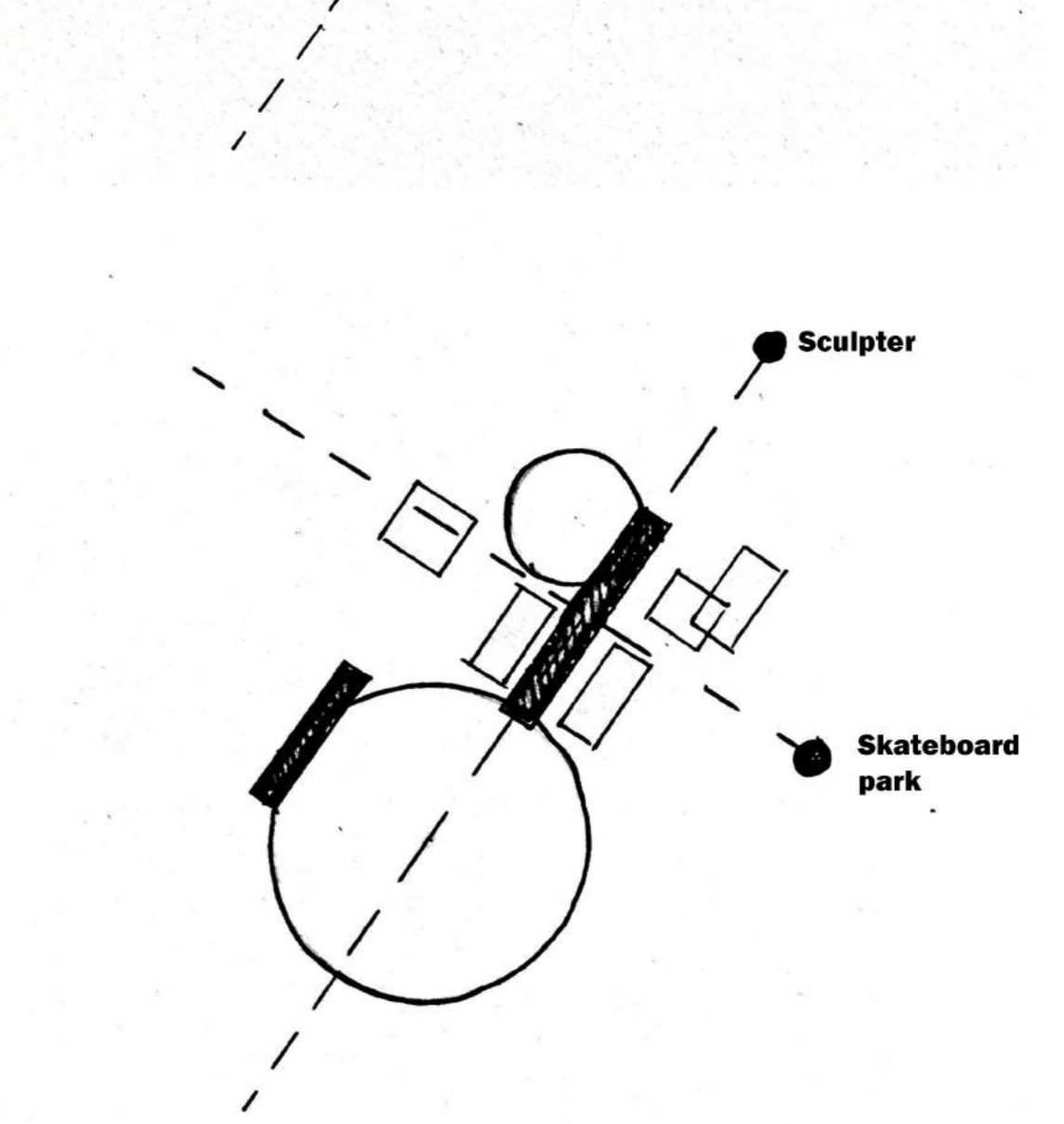
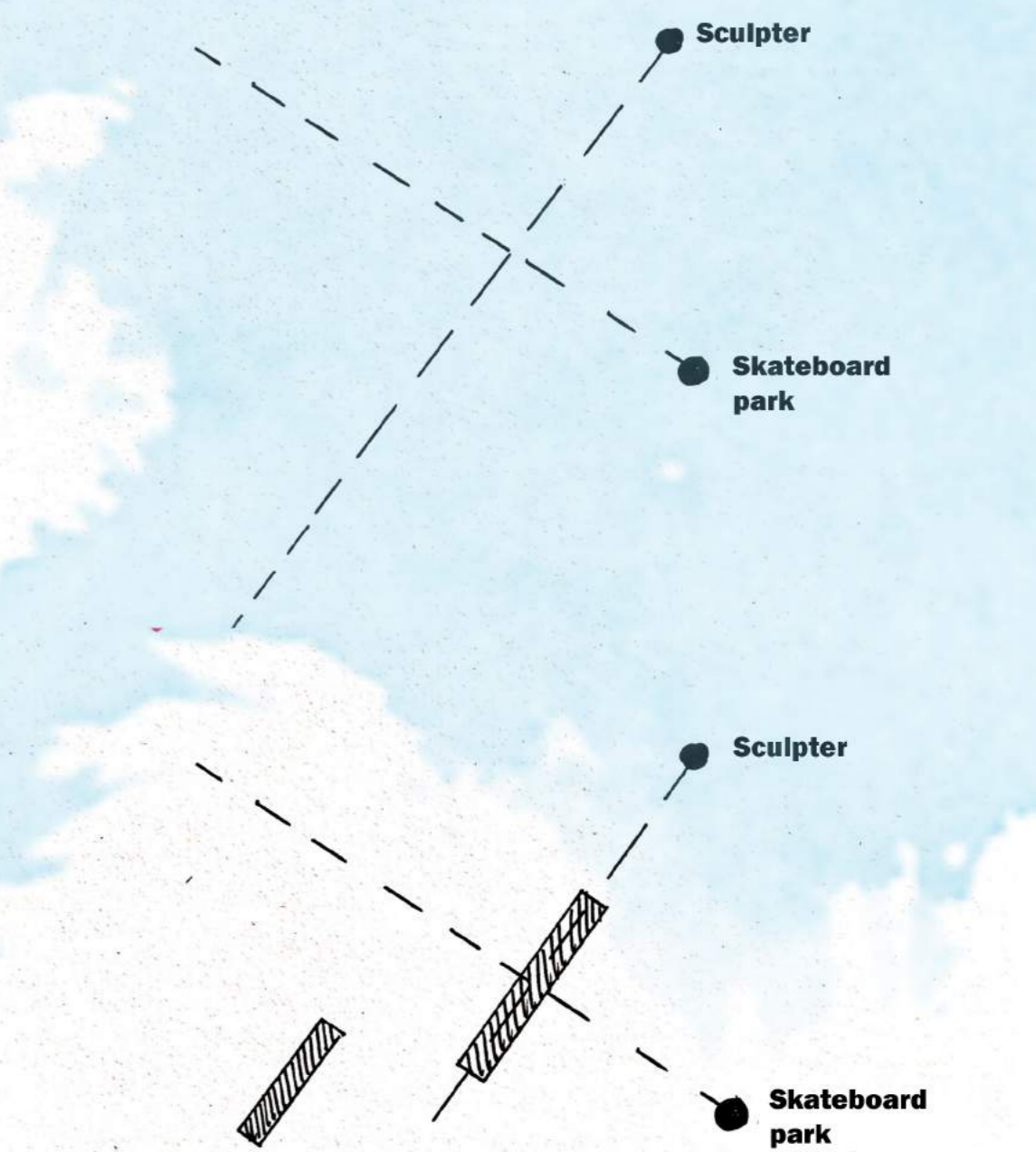
THE BOATHOUSE PROJECT

INSPIRED BY TADAO ANDO

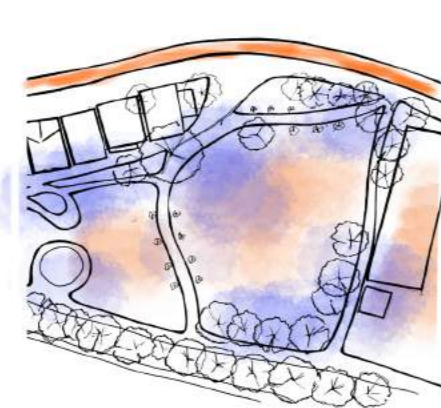


FROM ANDO TO THE BOATHOUSE

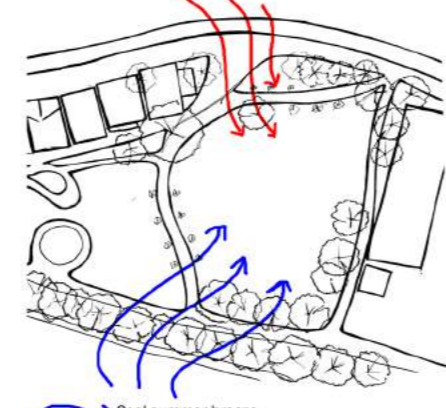
You cannot simply put something new into a place. You have to absorb what you see around you, what exists on the land, and then use that knowledge along with contemporary thinking to interpret what you see- TADAO ANDO



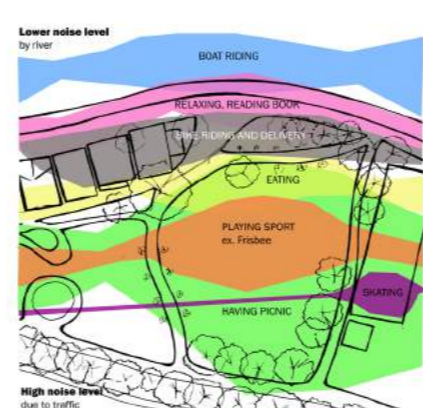
SUNPATH



TEMPERATURE



WIND



ACTIVITY

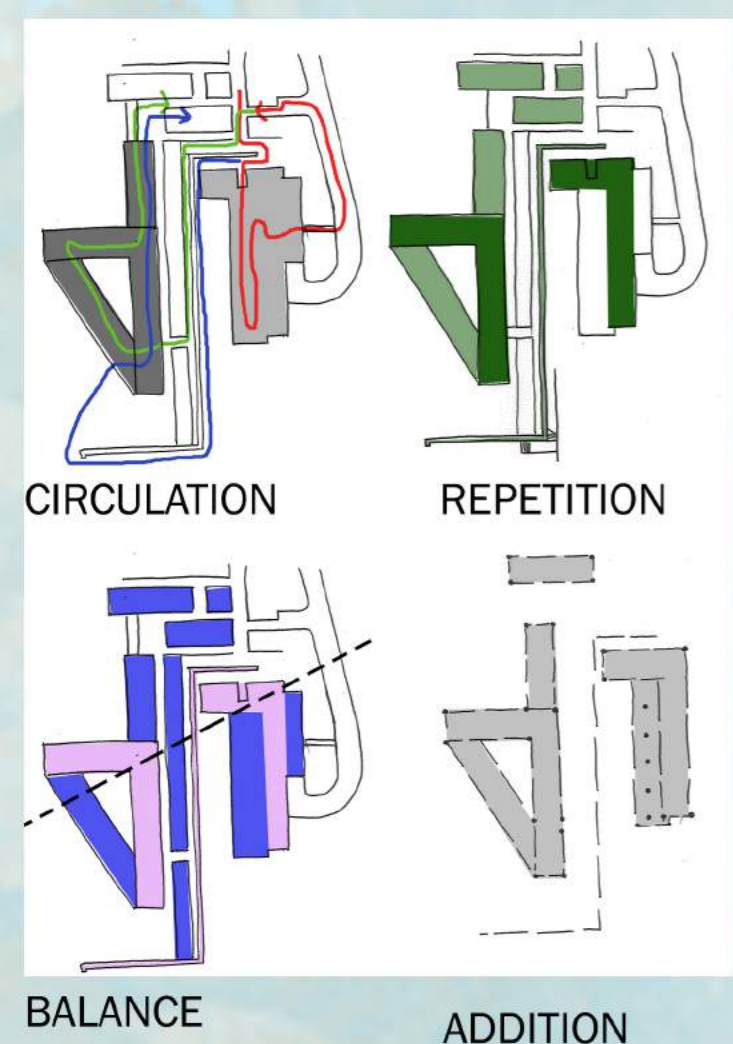


CIRCULATION

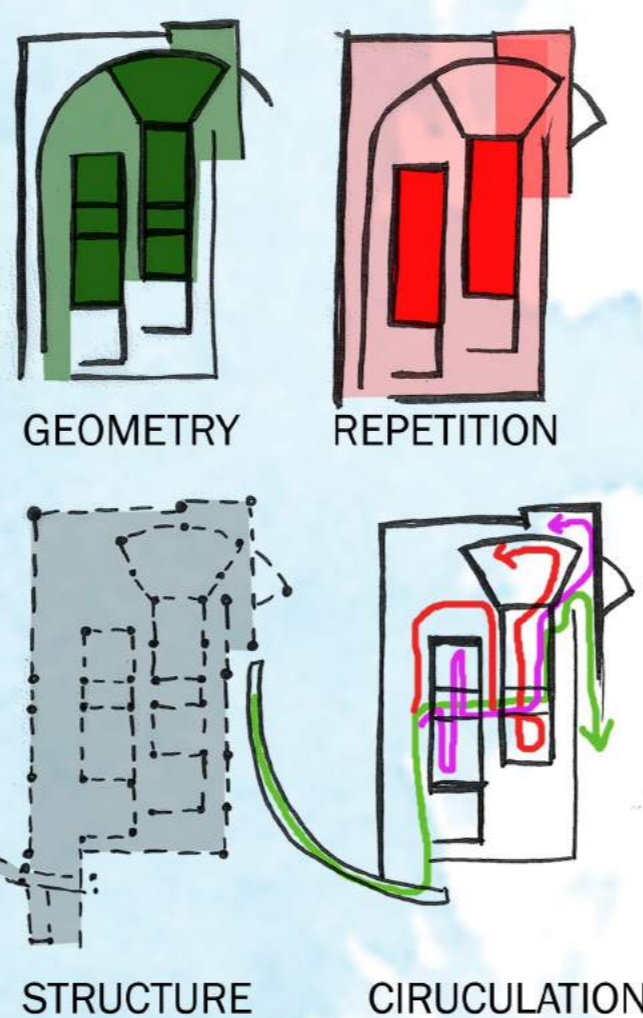
LEGEND
 CIRCULATION
 Boat mooring
 Walking
 Vehicle
 Skating
 Bike
 AREA
 Secondary garden
 Existing boat houses
 Cafe
 Delivery spot
 Alexandra Ave
 Tanna River



PRECEDENT



BONTE MUSEUM

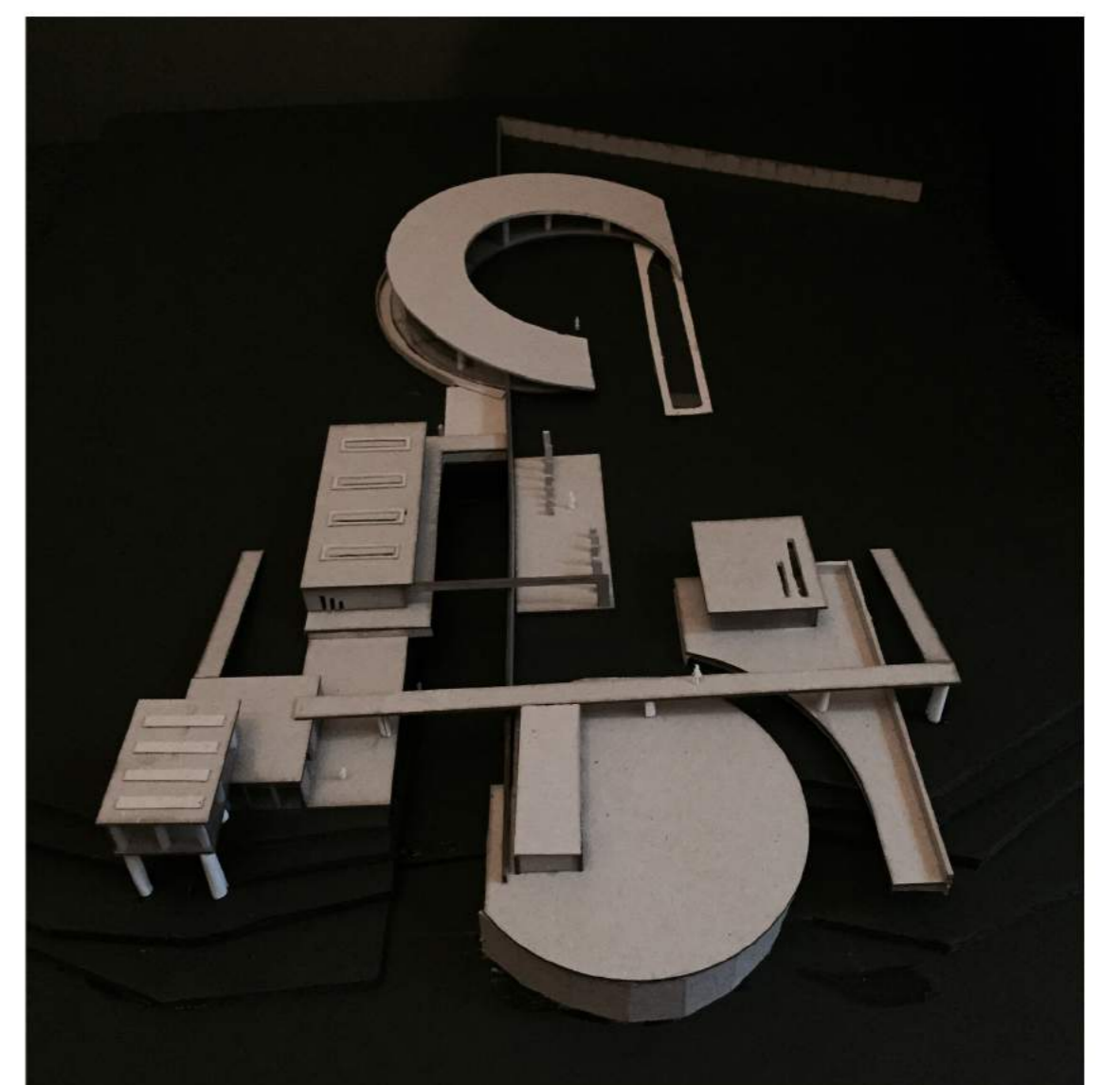
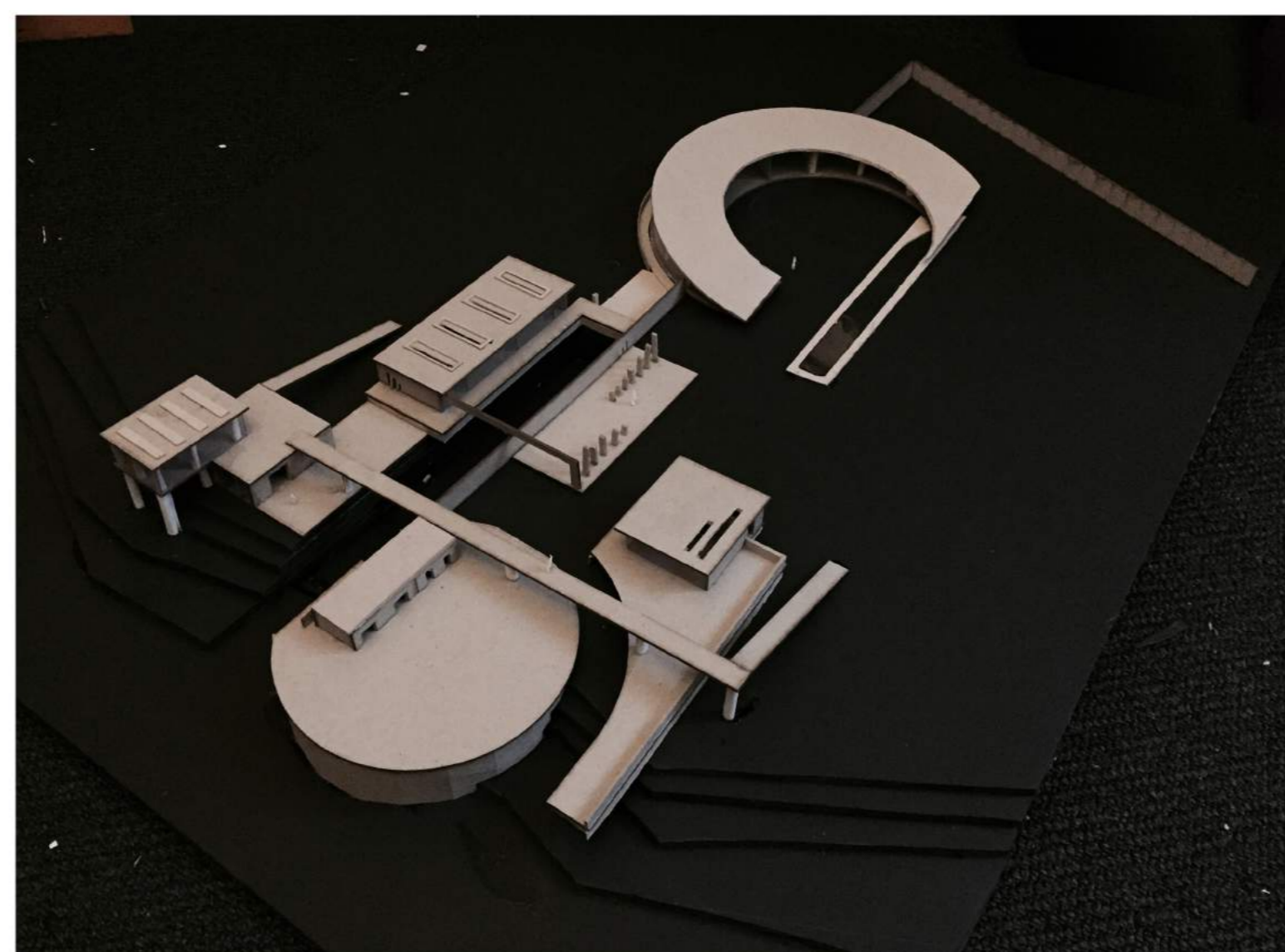
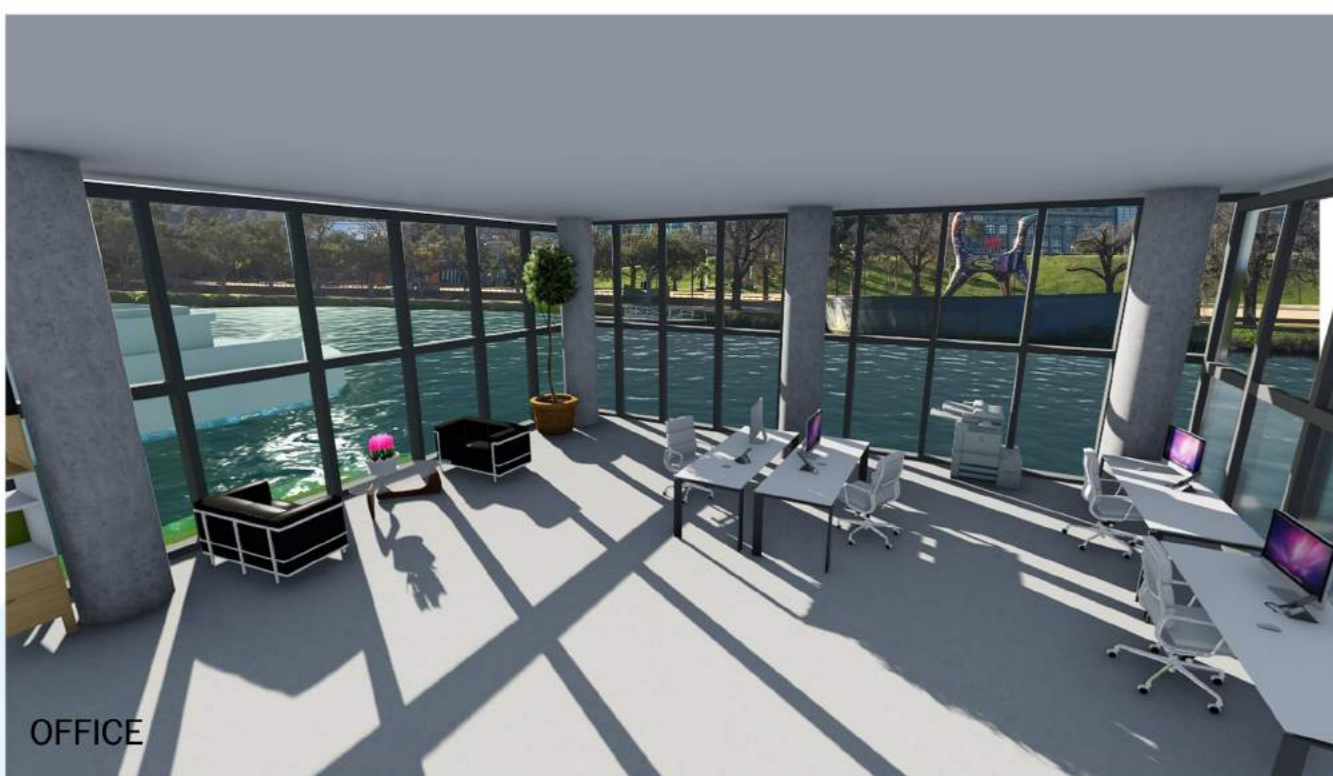
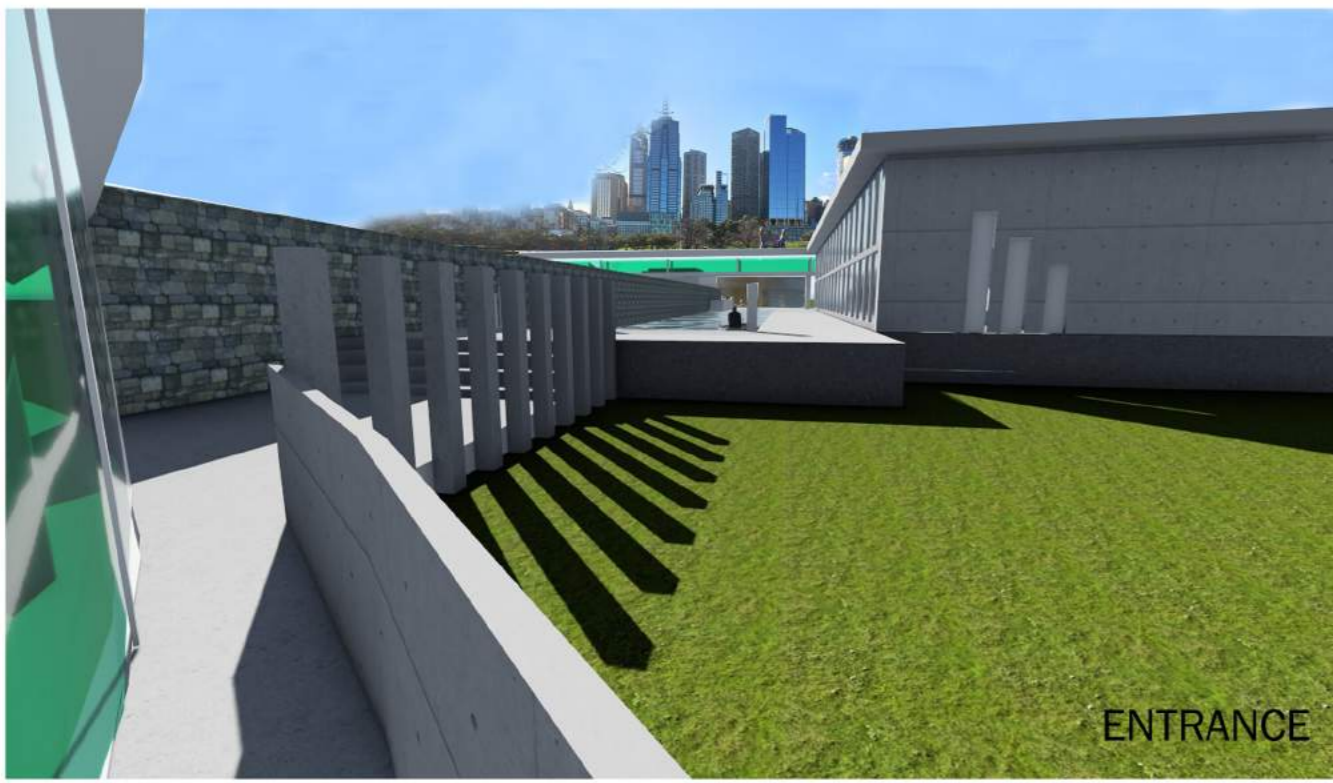


CHILDREN'S MUSEUM



THE BOATHOUSE PROJECT

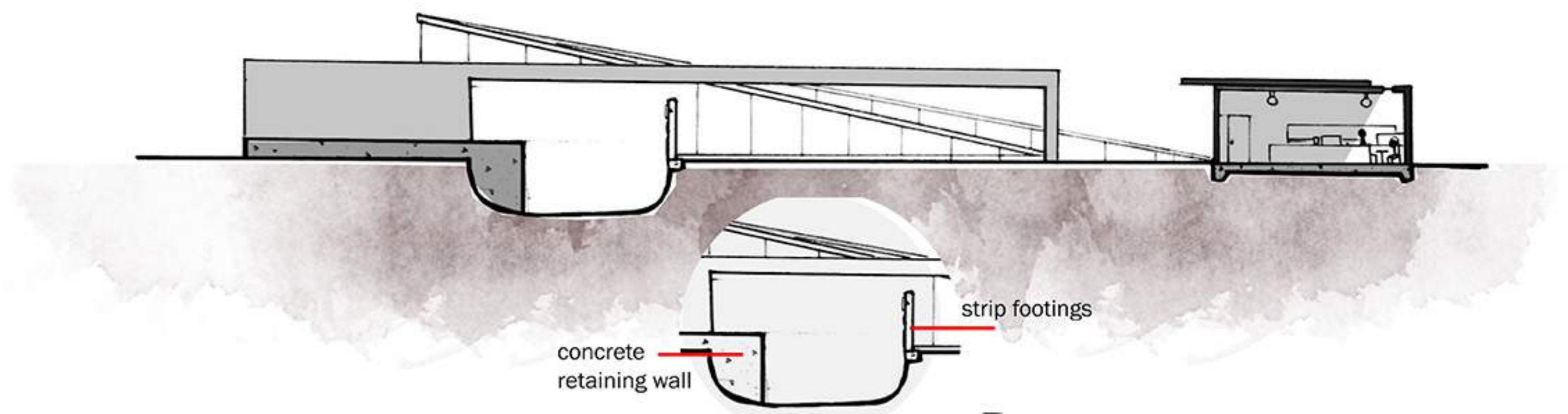
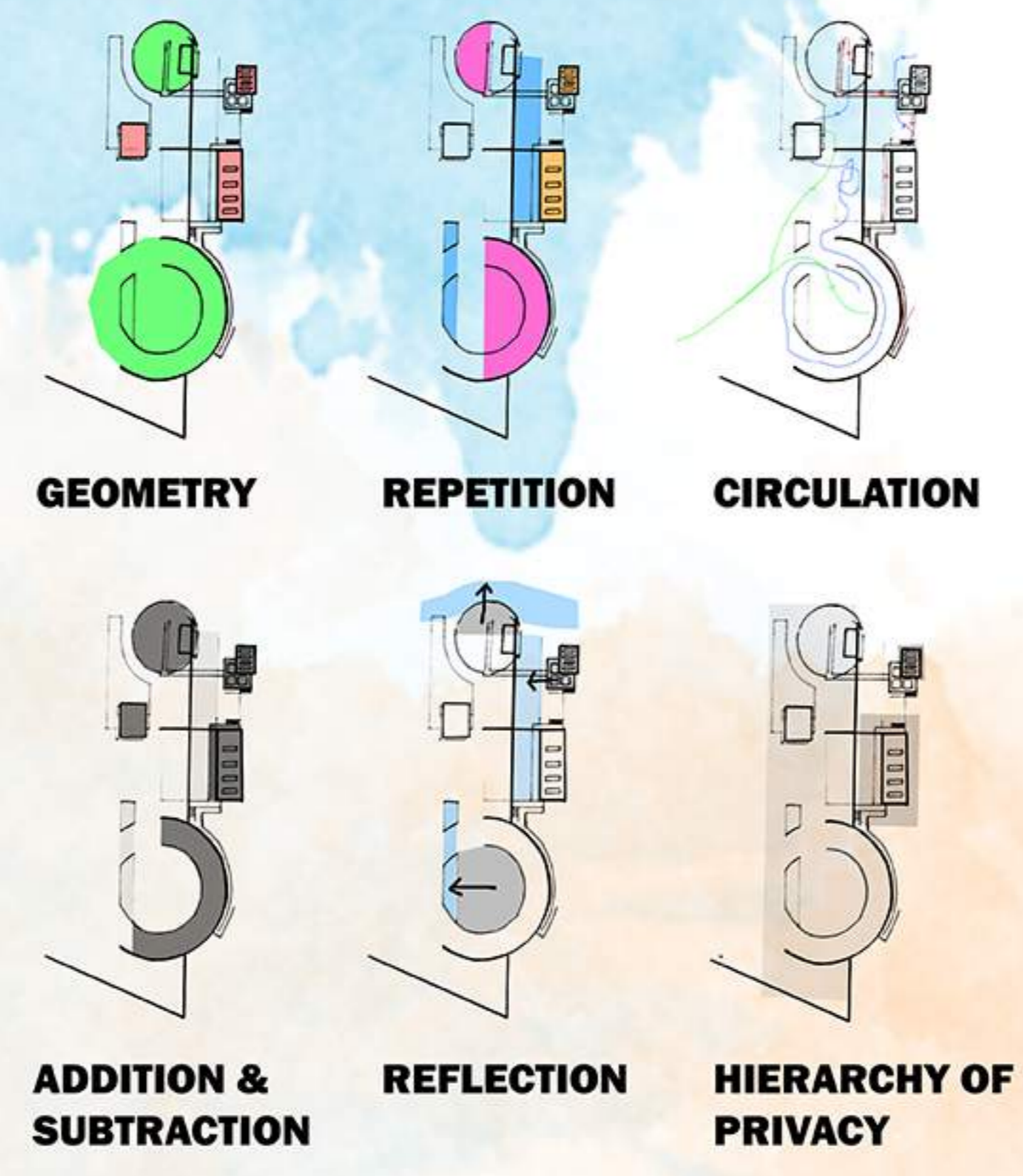
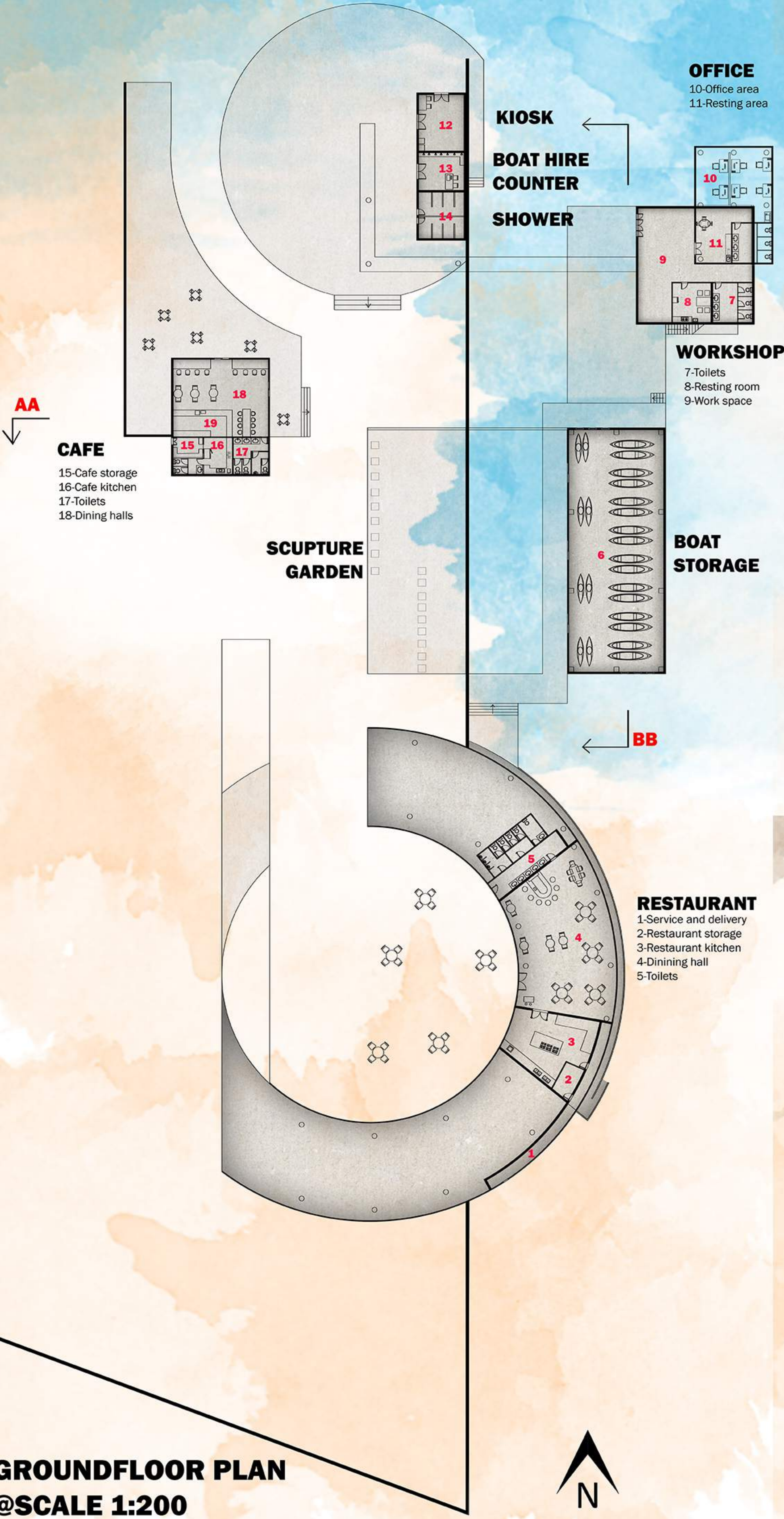
INSPIRED BY TADAO ANDO



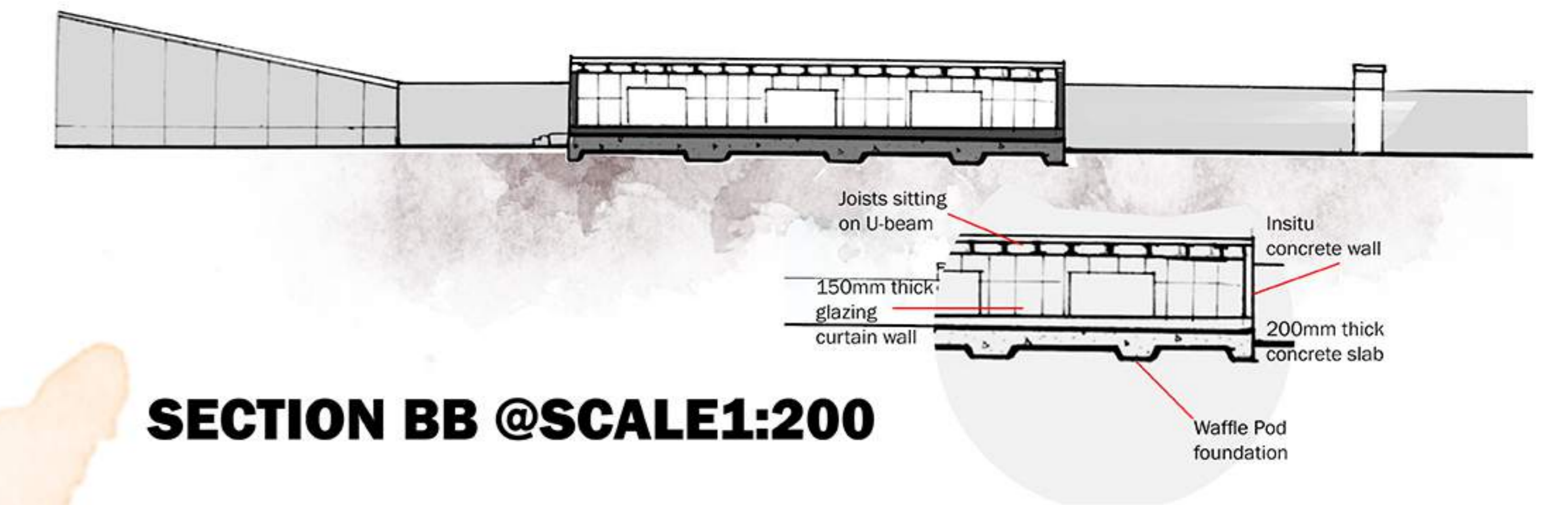
I believe the way people live can be directed a little by architecture
--Tadao Ando

THE BOATHOUSE PROJECT

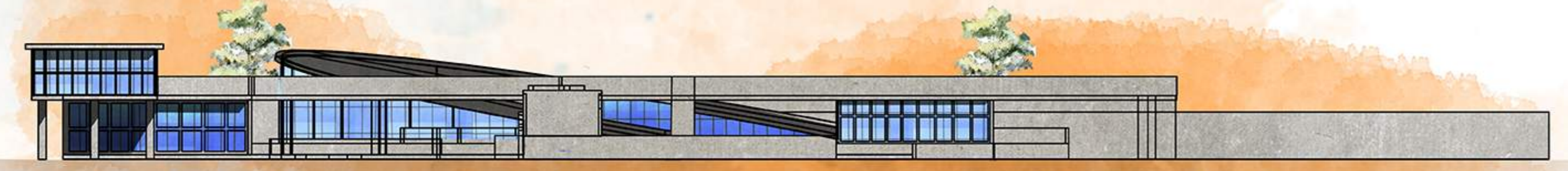
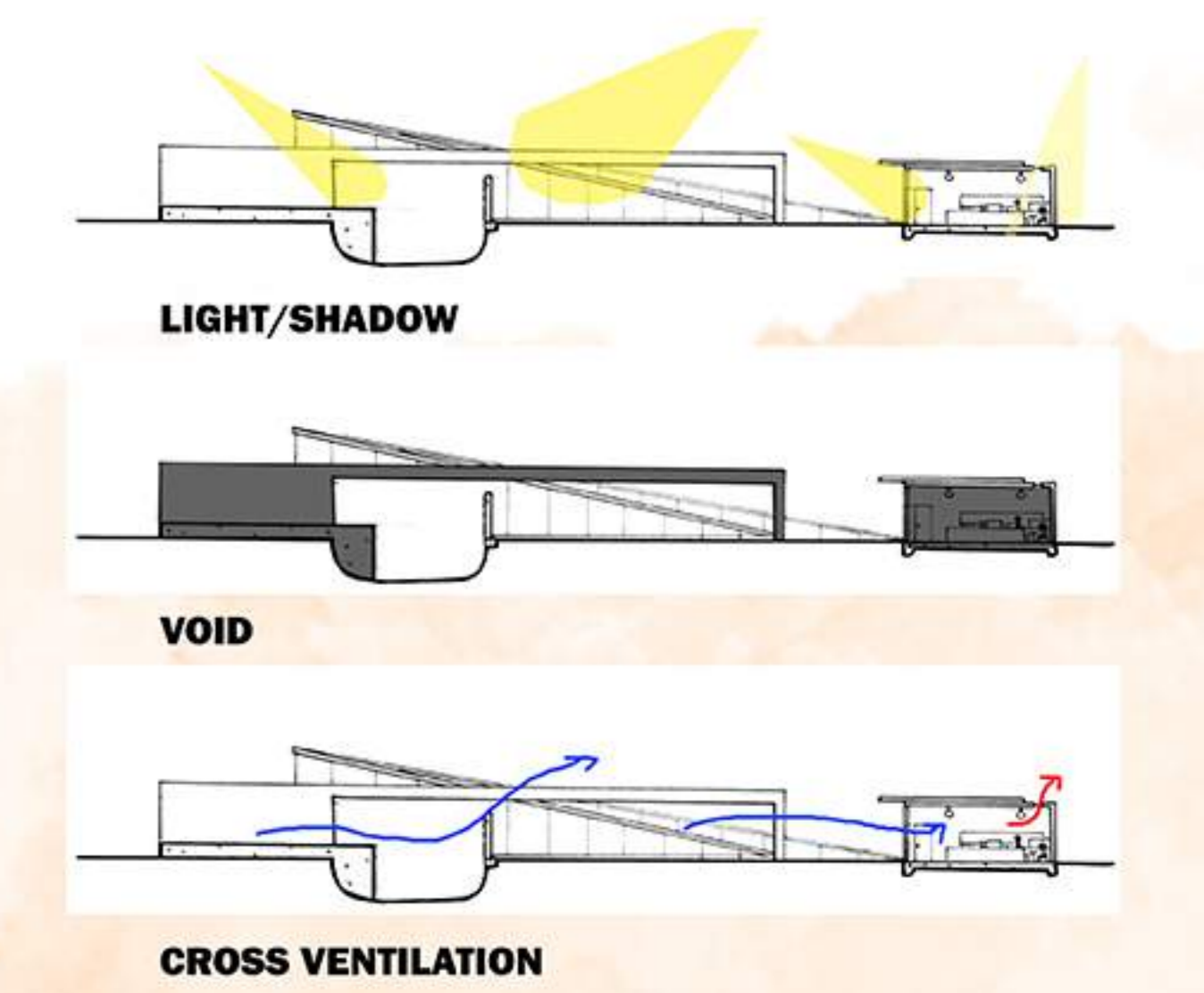
INSPIRED BY TADA0 ANDO



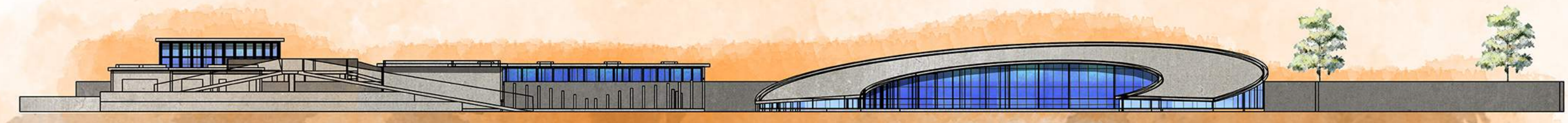
SECTION AA @SCALE1:200



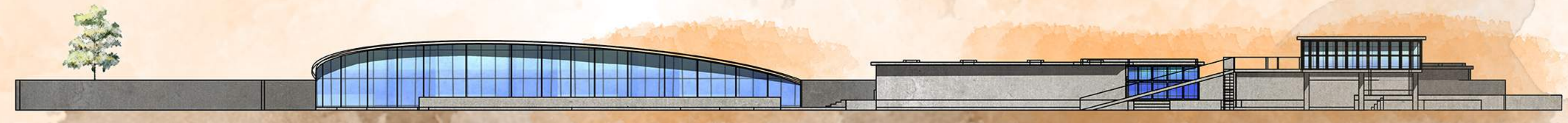
SECTION BB @SCALE1:200



NORTH ELEVATION @SCALE1:200



WEST ELEVATION @SCALE1:200



EAST ELEVATION @SCALE1:200